

Garward P1

Hi Geoffrey

I have been a long time getting back to you , but I have been waiting for some rain to arrive and to be around to see the results of Capiphon working with my retaining wall.

Just to remind you of the problem I needed to solve. The non existing 'retaining wall' that came with the house was extremely close to the fence line, so excavation for a 'conventional' wall drainage was out of the question, and the search for an alternative led me to you.



Garward P2

Unfortunately I was unable to get detailed photos of the installation as heavy rain was forecast when I was putting it all together, and speed was required to beat the heavy falls that were close at hand.

The wall face was trimmed with minimal disturbance and carefully undercut at the base to allow drainage pipe set up with fall.

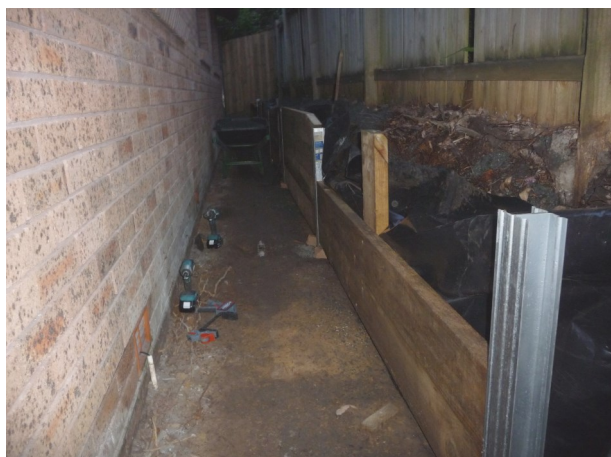
Cuts made in pipe to take the [Capiphon Belts](#) spaced closer in the far corner where the water flow from adjacent land was greatest.



Pipe was removed, and re-laid after plastic sheet was set under the pipe with allowance to cover the inside face of the wall. [Capiphon Belts](#) were set into the pipe (not the easiest with the curling belt).



Wall sleepers were set in place, plastic lifted and taped, [Capiphon Belts](#) were tacked or held in place and backfilling of coarse washed sand completed carefully so as to not have the wall face knocked down with the fill



Garward P3

The wall as completed.

Very happy with the completed project.

From yesterdays fairly heavy rain, the first I have been home to see, all water was taken away by the [Capiphon Belts](#).

When looking for a drainage system to work within the restricted spaces of wall replacement I was a little sceptical as to the ability of the product to cope with the large volume of water running through from adjacent properties. The volume of water was quite a worry.

I could not be happier with the results from using [Capiphon Belts](#) and system. The help from Geoffrey in designing how close together to place the belts has resulted in a satisfactory system dry paths and I have lost the running river down the side of the house.

A highly recommended system.

